

Beautiful KITCHENS & Baths™

Celebrate Style

19 Rooms That Impress

Winter 2012
Display until February 5

\$9.99



BHG.com/KitchenBath

**Add Warmth to a
White Kitchen** p. 36

**Ultimate Luxury:
Master Baths That Have It All**

features

36 high expectations

A soaring ceiling and statement-making windows give this family kitchen a grand feel.

42 southern hospitality

This renovation transformed a cramped kitchen in an 1880s home into a showplace for entertaining.

50 country grandeur

River views greet visitors and invite them to unwind in this casually elegant kitchen.

56 small space, big flavor

A big-city kitchen packs luxurious amenities into a petite floor plan.

62 island style

Watery blue and green accents infuse this white kitchen with a dose of Caribbean flair.

70 graceful approach

Converting a pantry into custom wine storage elevates the style in this Louisiana kitchen.

76 simply sleek

Bold red accents energize a kitchen with streamlined European-style cabinetry.

84 lessons in character

Detailed cabinetry in warm wood tones with furniturelike looks tells a tale of old-world style.

90 layer it luxurious

Marble and a crystal chandelier are just a sampling of the opulent features in this master bath.

96 linear equation

Contrasting light and dark surfaces add warmth in a clean-lined master bath—with a fireplace!

102 heavenly retreat

Natural light and glamorous touches redefine elegance in this nod to Old Hollywood style.

108 modern glamour

Sophisticated materials mingle with a masculine color scheme in a couple's contemporary bath.

114 soak up a view

Oversize picture windows near a sculptural tub allow bathers to connect with nature.

BEAUTIFUL KITCHENS & BATHS
features
WINTER 2012



Create a showplace that will not only impress your guests but inspire you every day. Refreshing expanses of marble and shimmering tile turn a utilitarian master bath into an indulgent retreat. Soaring architectural beamed ceilings and cabinetry dressed in handcrafted details encourage lingering in the kitchen. Turn the page to find the style that speaks to you.

Layer it *Luxurious*

Vancouver designer Tereza Bajan shares her insights for an indulgent master bathroom with architectural substance.

BY ANN WILSON | PHOTOS JOHN GRANEN
FIELD EDITOR LINDA HUMPHREY





Opposite: Refined accessories, such as this sculptural chandelier, enhance the room's cultured character. **This photo:** Marble floor tiles set in a basket-weave pattern bring a sense of movement that attracts and carries the eye. Drapery panels pick up on the floor's silvery gray tones.

The perfectly proportioned slipper tub presents a scintillating silhouette that's far less bulky than a tub encased in a surround. The tub's shape inspired the arched mirror framed by paneled millwork that adds architectural interest to an underused wall.





Tell us about your involvement in this spec home that was built by Troy Van Vliet of Tavan Developments.

TEREZA BAJAN: I designed the interiors in the home. I came on when the architect's plans were completed, which allowed me to make some adjustments to how the bathroom was laid out. The space had a vaulted ceiling and French doors opening to a deck. The biggest challenge was working with the two 8-foot-long walls, but I optimized space by placing the vanity along one wall and floating the slipper tub.

What was your vision for this space?

TEREZA BAJAN: My first thought was: How do I make this bathroom a "wow"? I pictured a spa-like spot where a busy mom could get away, relax in the tub while looking out the French doors, then sit outside on the furnished deck, which I thought of as an expansion of that luxurious experience. We added open rafters to accentuate the height of the ceilings and incorporated a barrel-vaulted ceiling in the steam shower. A wall treatment of painted panels framing an arched mirror adds another bit of opulence.

How did you further this sense of opulence?

TEREZA BAJAN: I wanted to create a sense of old Hollywood glamour and luxury, so I used high-end materials, such as Carrara marble, marble tiles, and Swarovski crystal details. The slipper tub and chrome faucets were chosen for their feminine curves—curves that repeat on the shower's ceiling, rounded rafters, and the mirrored wall.

The room is monochromatic but not at all monotonous. What inspired your scheme, and how did you keep it interesting?

TEREZA BAJAN: Marble and chrome are used throughout the home, so I drew the gray and silver tones from those materials. Though there's a lot of marble, it appears in different forms. It's seen as slabs, mosaics, and a basket-weave pattern on the floor. It's the subtle mix of patterns, textures, and details, such as the waterfall edge on the vanity countertop, that make the space so interesting. The drapery panels have a beautiful sheen; the chrome fittings, the crystal chandelier, and the mirrors add sparkle.

RESOURCES BEGIN ON PAGE 118.

DESIGNER INSIGHTS

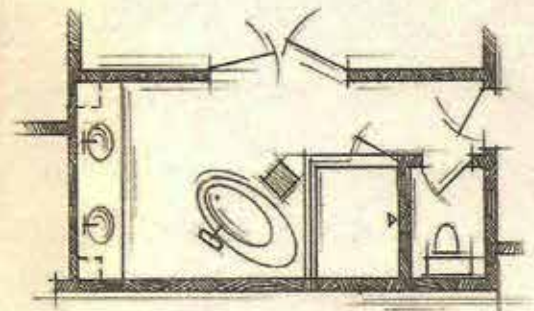
Making Grand Statements

Tereza Bajan knows how to stretch a relatively small footprint to accommodate high-style designs that live larger and more luxuriously than one might expect. How does she do it?

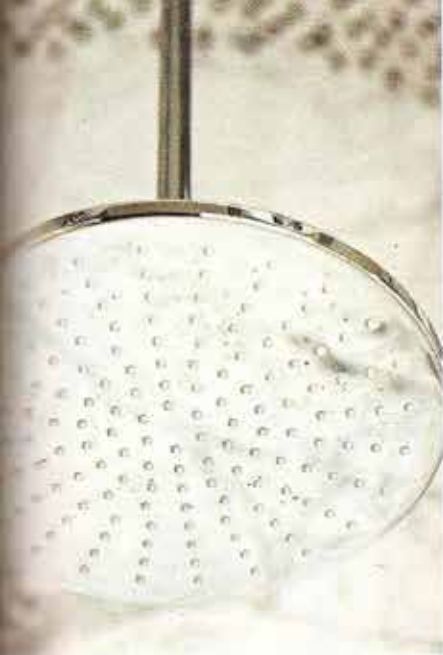
• **Put on the ritz.** The designer ensures that every material and fitting is striking in its own right. She thoughtfully places each component so it directs attention to another noteworthy element, which in turn amplifies interest and visually enlarges the space.

• **Accentuate the positives.** She included a barrel-vaulted ceiling in the steam shower to balance the room's vaulted ceiling; marble mosaics draw attention to the ceiling's shape. A crystal chandelier and substantial painted rafters capped with big ball finials draw the eye up and emphasize the ceiling's height. Marble surfaces provide classically elegant backdrops that highlight the chrome and crystal embellishments.

• **Fool the eye with fabulous treatments.** Impressive mirrors, inset in a marble-clad niche behind the vanity and framed with custom millwork on a wall facing the French doors, make a statement without intruding on the floor space. The reflective surfaces magnify light and interior and exterior views, which in turn magnify how large the room feels. Marble tiles fashion uninterrupted stretches of basket-weave patterns that carry attention from corner to corner.







Opposite: The restorative steam shower has streamlined hardware and floor-to-ceiling marble tile viewed through barely-there frameless glass doors. **Above left:** A large ceiling-mount, rain-style showerhead rinses bathers with the natural feel of falling water. **Above:** A cantilevered marble seat serves the same purpose as a built-in bench but takes up less floor space. Chrome body sprays are designed to pamper. **Above right:** Details count! The geometric pattern on the shower drain cap brings style to a typically utilitarian element. **Right:** Minimalist handles on vanity drawers keep the spotlight focused on more dramatic elements in the room. **Below right:** Mounting the Swarovski crystal sconces on the mirror doubles the fixtures' prismatic glitz. **Below:** Bedazzling and statuesque, the tub filler also features a handheld showerhead that enhances relaxation. **Below left:** Carrara marble, appearing in varying applications, keeps interest running high in this understatedly serene design. **Left:** Swarovski crystal finials dress up the sinks' sinuously shaped chrome faucets.